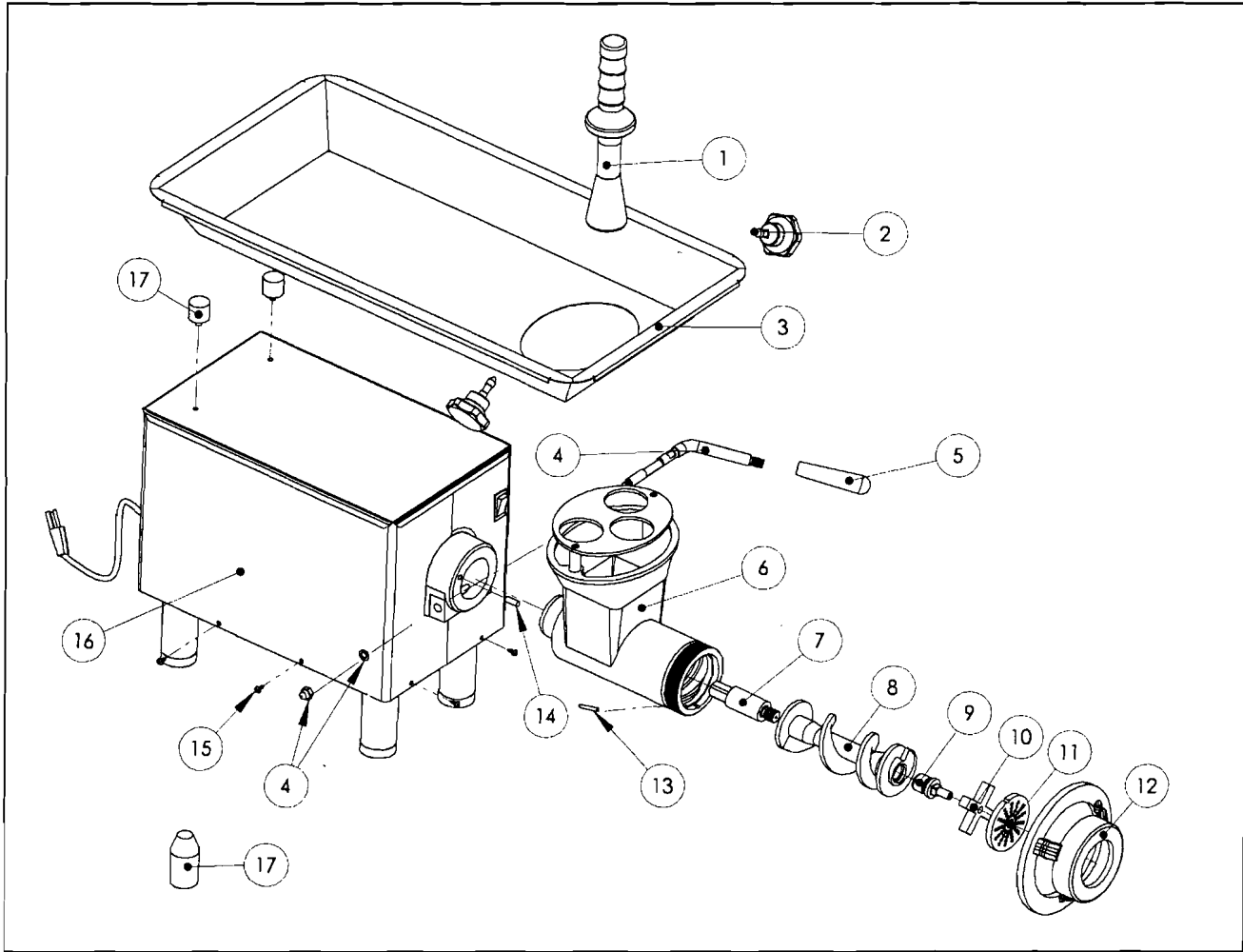


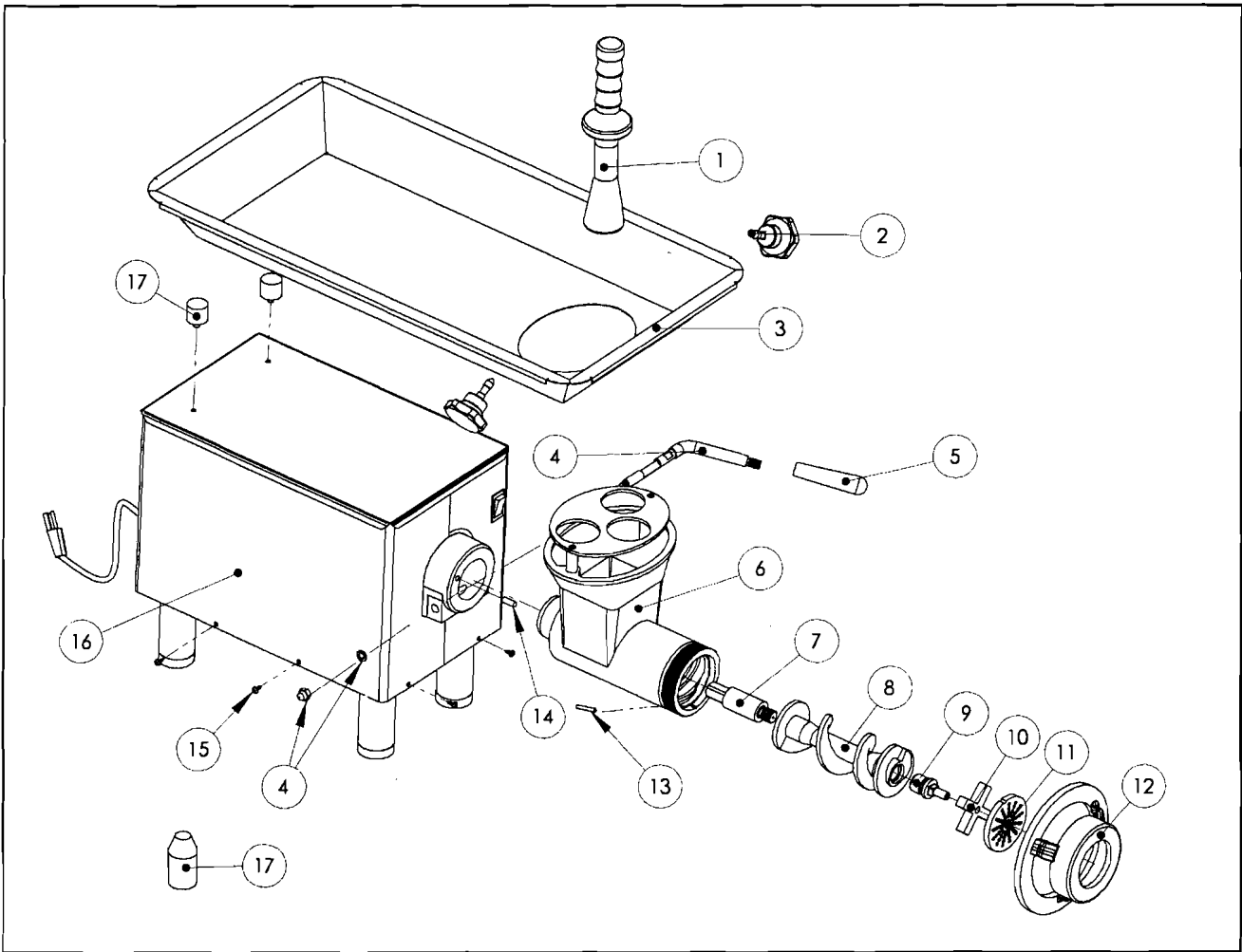
ITEM	DESCRIPCION	CODE	QTY.	R.S./100
1	2 HP MONOPHASE MOTOR 60 Hz	05-01185	1	2
1	2 HP MONOPHASE MOTOR 50 Hz	05-03911	1	2
2	GEAR BOX	05-00189	1	4
3	TAPON GEAR BOX	05-01101	1	5
4	GEAR BOX KIT	05-71894	1	2
5	BOLTS HEX HEAD 3/8" X 1 1/4" AND WASHERS	05-72819	4	2
6	BRONZE BUSHING	05-00131	1	4
7	SLOT KEY	05-00655	1	2
8	KEY 3/16" X 3/16" X 1 3/8"	05-00403	1	2
9	GEAR (PINION)	05-70193	1	2
10	DEAR (FLAT)	05-70567	1	2
11	SLOT KEY 1/4" X 1/4" X 11/16"	05-00324	1	2
12	WOODRUFF KEY #606-9	05-00296	1	2
13	GEAR FOR SQUARED INNER COUPLIN 60 HZ	05-75643	1	2
13	GEAR FOR SQUARED INNER COUPLIN 50 HZ	05-76744	1	2
14	DOUBLE SHAFT GEAR 60 HZ	05-72180	1	2
14	DOUBLE SHAFT GEAR 50HZ	05-71351	1	2
15	SQUARED INNER COUPLING COVER	05-00329	1	2
16	BRONZE BUSHING	05-75641	1	4
17	GASKET	05-00146	1	4
18	GEAR COVER KIT	05-72408	1	2
19	BOLTS HEX HEAD 5/16" X 1 1/4"	05-00408	6	5
20	AXIAL BALL BEARING	05-06571	1	2
21	SQUARED INNER COUPLING FOR GEAR	05-75642	1	2
22	SEAL # 12545	05-06572	1	2
23	PIN 3/8" X 1"	05-01588	2	2
	GEAR KIT M-22RW 60 Hz	05-72409	1	1
	GEAR KIT M-22RW 50 Hz	05-72410	1	1

R.S.=REQUERIMENT STOCK



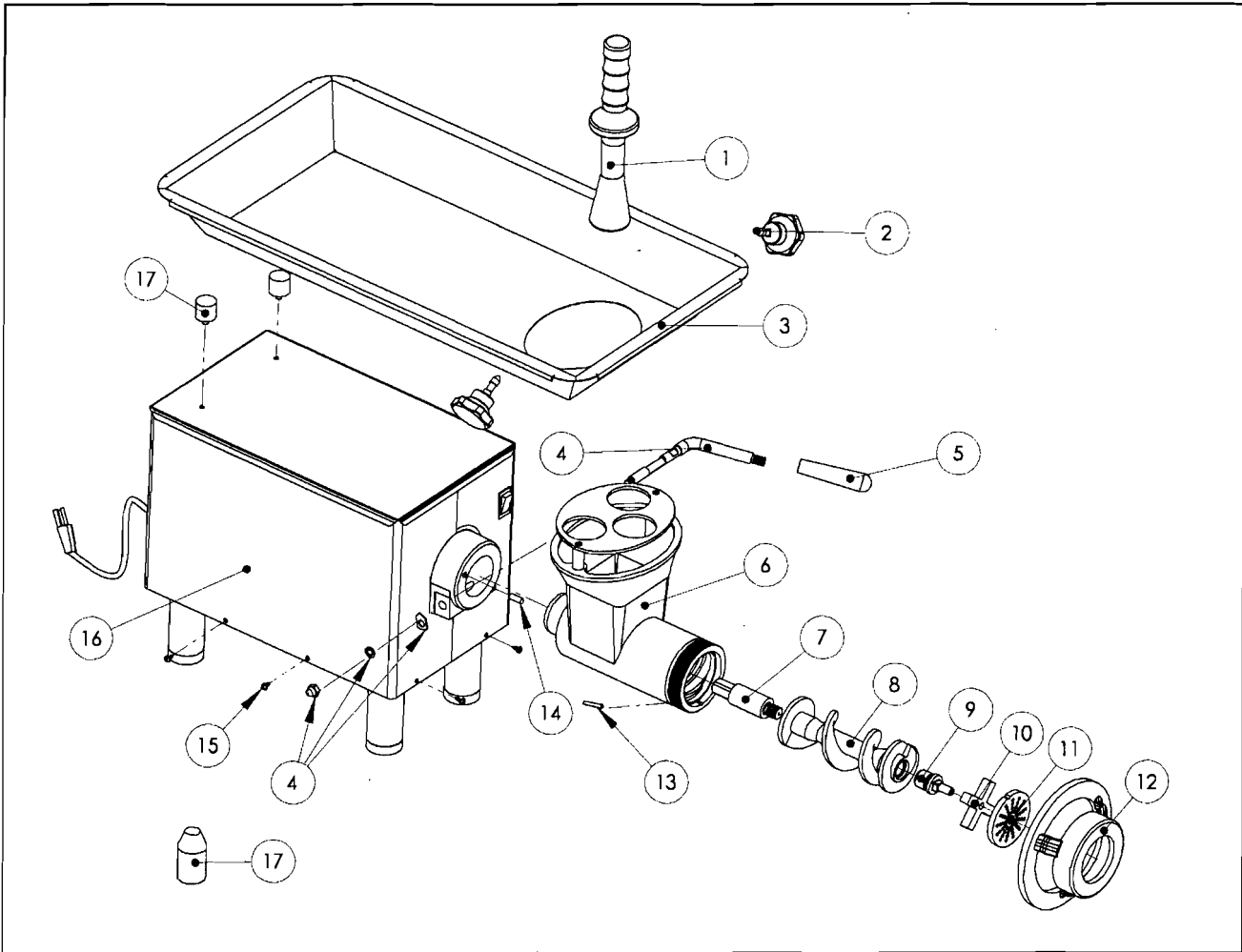
ITEM	DESCRIPCION	CODE	QTY	R.S./100
1	STOMPER	05-01794	1	10
2	TRAY KNOB	05-70422	2	10
3	STAINLESS STEEL PRODUCT TRAY.	05-71576	1	2
4	HANDLE AND ACORN NUT	05-72411	1	5
5	HANDLE KNOB	05-01488	1	20
6	HEADSTOCK	05-75636	1	2
7	REARROD	05-06586	1	2
8	FEED SCREW (WORM)	05-75280	1	2
9	FRONT ROD	05-70201	1	10
10	KNIFE	03-32222	1	20
11	PLATE	03-41012	1	10
12	HEADSTOCK RING	05-70383	1	2
13	PIN 3/16" X 2 1/16"	05-70228	1	20
14	PIN 5/16" X 3/4" S.S.	05-01134	1	5
15	SELF TAPPING BOLT 8-32	05-03427	8	5
16	CASE AND THERMIC-ISOLATING ASSY.	05-72690	1	2
17	BUMPER (RUBBER)	05-75556	2	20

R.S.=REQUERIMENT STOCK



ITEM	DESCRIPCION	CODE	QTY	R.S./100
1	STOMPER	05-01794	1	10
2	TRAY KNOB	05-70422	2	10
3	STAINLESS STEEL PRODUCT TRAY.	05-71576	1	2
4	HANDLE AND ACORN NUT	05-72411	1	5
5	HANDLE KNOB	05-01488	1	20
6	HEADSTOCK	05-75636	1	2
7	REARROD	05-06586	1	2
8	FEED SCREW (WORM)	05-75280	1	2
9	FRONT ROD	05-70201	1	10
10	KNIFE	03-32222	1	20
11	PLATE	03-41012	1	10
12	HEADSTOCK RING	05-70383	1	2
13	PIN 3/16" X 2 1/16"	05-70228	1	20
14	PIN 5/16" X 3/4" S.S.	05-01134	1	5
15	SELF TAPPING BOLT 8-32	05-03427	8	5
16	CASE AND THERMIC-ISOLATING ASSY.	05-72690	1	2
17	BUMPER (RUBBER)	05-75556	2	20

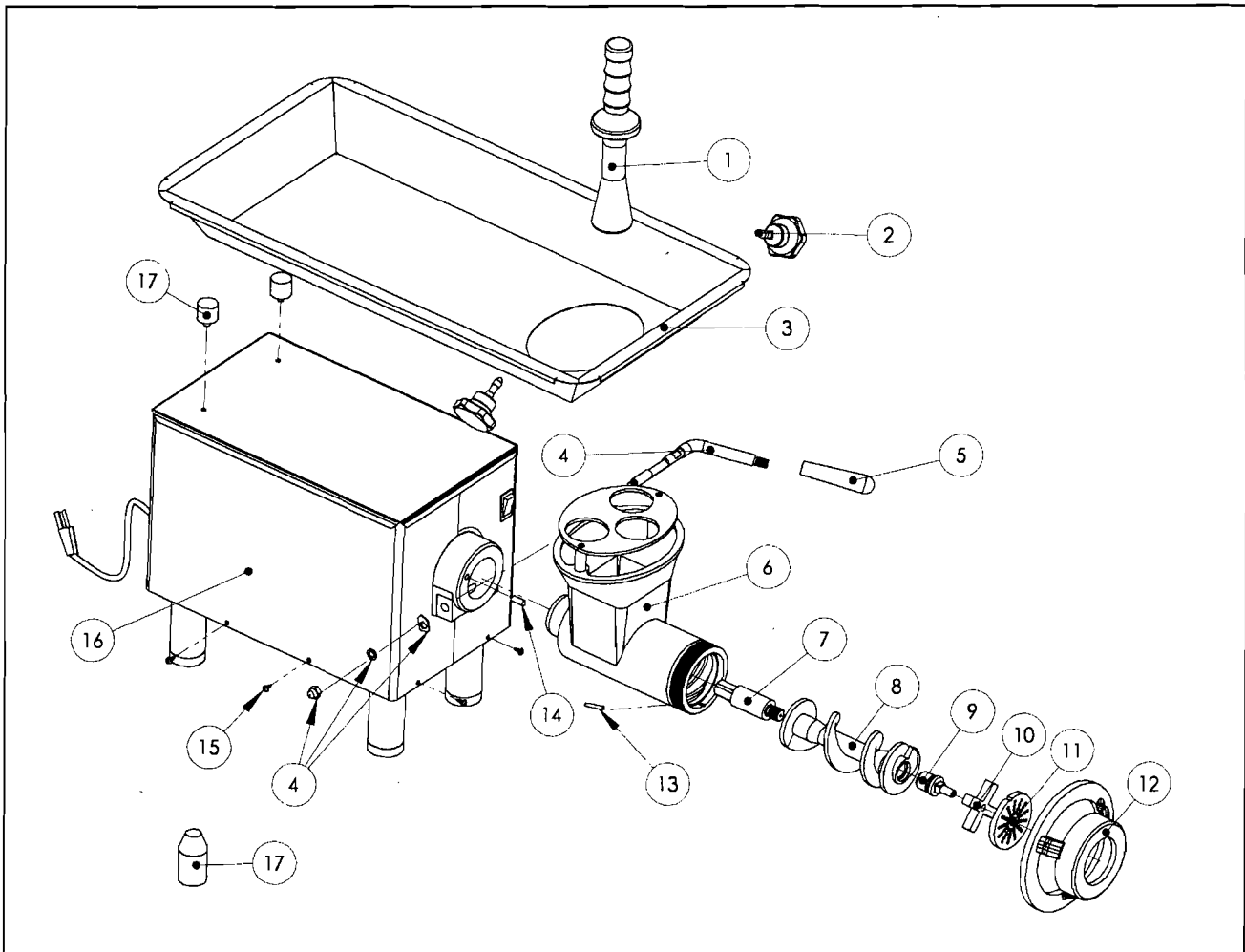
R.S.=REQUERIMENT STOCK



ITEM	DESCRIPCION	CODE	QTY	R.S./100
1	STOMPER	05-01794	1	10
2	TRAY KNOB	05-70422	2	10
3	STAINLESS STEEL PRODUCT TRAY.	05-71576	1	2
4	HANDLE AND ACORN NUT	05-72411	1	5
5	HANDLE KNOB	05-01488	1	20
6	HEADSTOCK	05-75636	1	2
7	FEED SCREW (WORM)	05-06586	1	2
8	FEED SCREW (WORM)	05-75280	1	2
9	FRONT ROD	05-70201	1	10
10	KNIFE	03-32222	1	20
11	PLATE	03-41012	1	10
12	HEADSTOCK RING	05-70383	1	2
13	PIN 3/16" X 2 1/16"	05-70228	1	20
14	PIN 5/16" X 3/4" S.S.	05-01134	1	5
15	SELF TAPPING BOLT 8-32	05-03427	8	5
16	CASE AND THERMIC-ISOLATING ASSY.	05-72690	1	2
17	BUMPER (RUBBER)	05-75556	2	20

NOTA: IS ADDED TO THE TOP OF THE LEVER KIT FROM THE SERIES K08-261

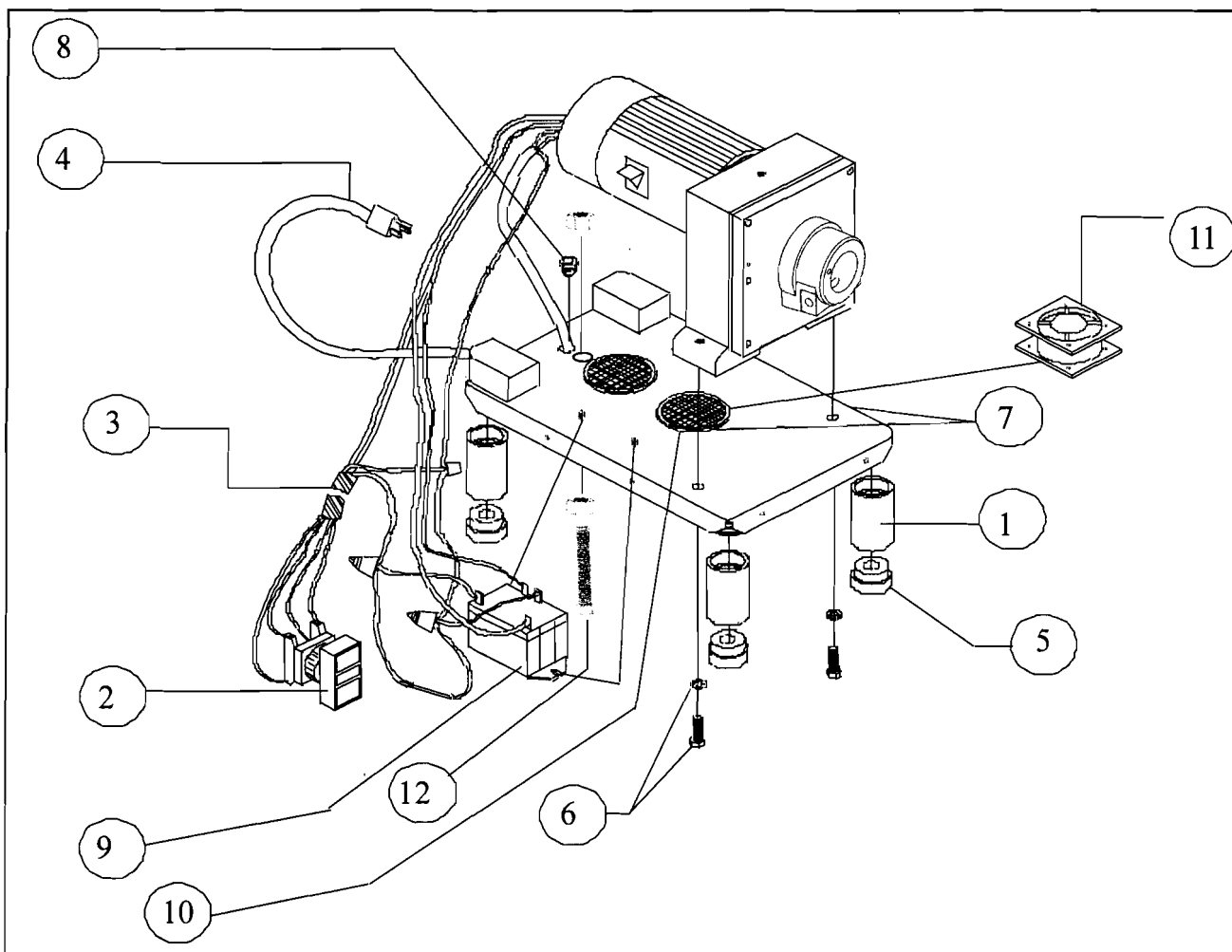
R.S.=REQUERIMENT STOCK



ITEM	DESCRIPCION	CODE	QTY	R.S./100
1	STOMPER	05-01794	1	10
2	TRAY KNOB	05-70422	2	10
3	STAINLESS STEEL PRODUCT TRAY.	05-71576	1	2
4	HANDLE AND ACORN NUT	05-72411	1	5
5	HANDLE KNOB	05-01488	1	20
6	HEADSTOCK	05-75636	1	2
7	FEED SCREW (WORM)	05-06586	1	2
8	FEED SCREW (WORM)	05-75280	1	2
9	FRONT ROD	05-70201	1	10
10	KNIFE	03-32222	1	20
11	PLATE	03-41012	1	10
12	HEADSTOCK RING	05-70383	1	2
13	PIN 3/16" X 2 1/16"	05-70228	1	20
14	PIN 5/16" X 3/4" S.S.	05-01134	1	5
15	SELF TAPPING BOLT 8-32	05-03427	8	5
16	CASE AND THERMIC-ISOLATING ASSY.	05-72690	1	2
17	BUMPER (RUBBER)	05-75556	2	20

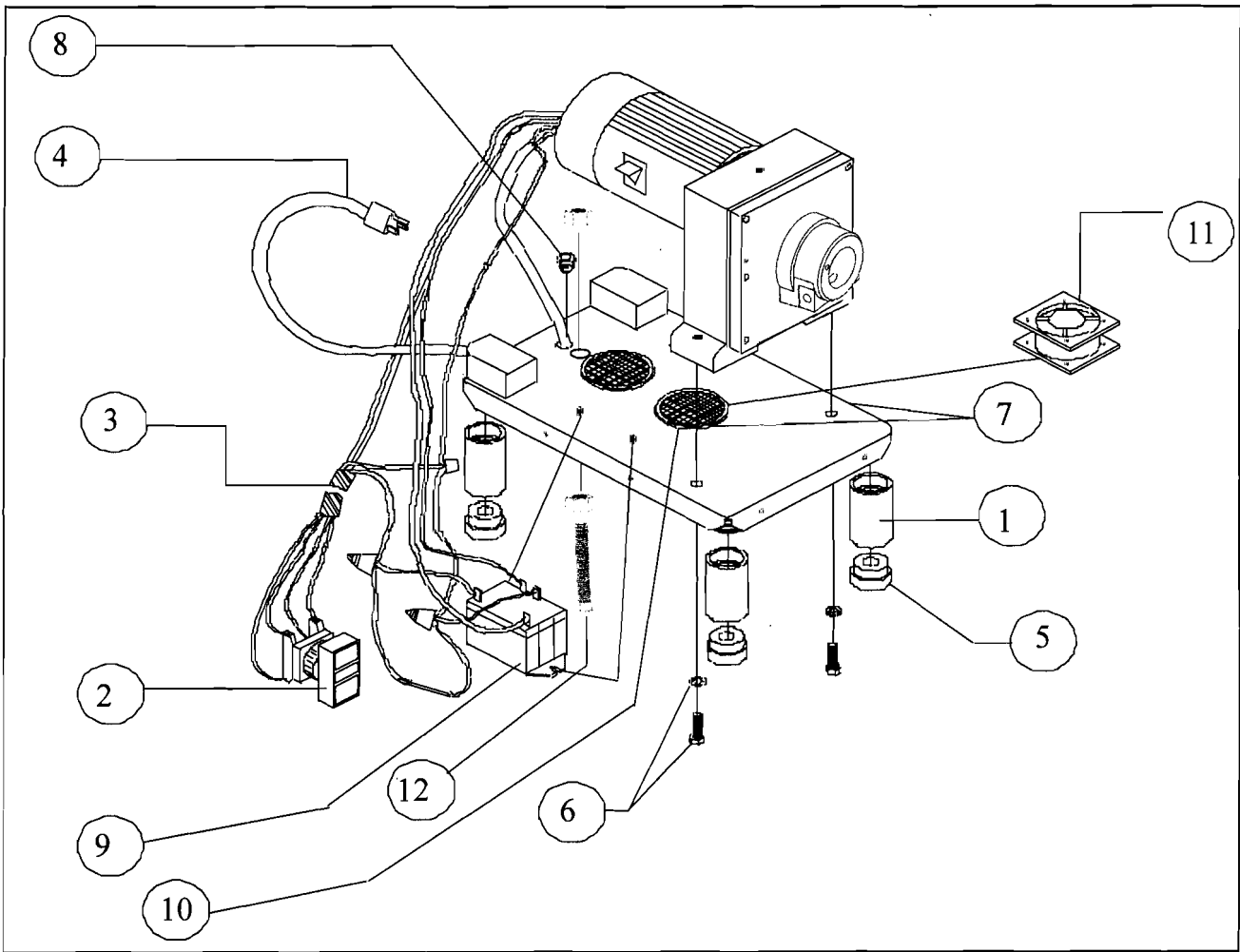
NOTA: IS ADDED TO THE TOP OF THE LEVER KIT FROM THE SERIES K08-261

R.S.=REQUERIMENT STOCK



ITEM	DESCRIPCION	CODE	QTY	R.S./100
1	4 3/4" ALUMINIUM LEG	05-71407	4	2
2	DOUBLE BUTTON SWITCH	05-02260	1	4
3	2 x 14 SJT UL APP CABLE W/ARNES.	05-00850	1	2
4	CE CORD KIT	05-00154	1	2
5	RUBBER PLUG-PAD	05-00333	4	2
6	BOLTS HEX HEAD 7/16" X 1 1/4" AND WASHER	05-71904	2	2
7	BASE AND BASE LID ASSY.	05-72706	1	2
8	GROMMET MP7P-2	05-00799	1	2
9	CONTACTOR 220	05-04848	1	2
10	BASE LID	05-00325	2	4
11	230 VCA AXIAL FAN	05-01534	1	2
12	MOTOR SUPPORT SCREW	05-75680	1	1

R.S.=REQUERIMENT STOCK



ITEM	DESCRIPCION	CODE	QTY	R.S./100
1	4 3/4" ALUMINIUM LEG	05-71407	4	2
2	DOUBLE BUTTON SWITCH	05-02260	1	4
3	2 x 14 SJT UL APP CABLE W/ARNES.	05-00850	1	2
4	CE CORD KIT	05-00154	1	2
5	RUBBER PLUG-PAD	05-00333	4	2
6	BOLTS HEX HEAD 7/16" X 1 1/4" AND WASHER	05-71904	2	2
7	BASE AND BASE LID ASSY.	05-72706	1	2
8	GROMMET MP7P-2	05-00799	1	2
9	CONTACTOR 220	05-04848	1	2
10	BASE LID	05-00325	2	4
11	230 VCA AXIAL FAN	05-01534	1	2
12	MOTOR SUPPORT SCREW	05-75680	1	1

R.S.=REQUERIMENT STOCK